



THE COLLEGE OF
OPTOMETRISTS

Stage Two

Overarching case scenario 58

AGE AND GENDER Female Aged 9 years

ETHNIC BACKGROUND Caucasian

OCCUPATION AND HOBBIES Primary School occasional VDU use; dancing

PRESENTING SYMPTOMS AND HISTORY First eye examination, no problems known but both parents short sighted

GENERAL HEALTH AND MEDICATION Hayfever, medication taken as required

PRESENT Rx, CENTRATION AND ACUITIES none

PD/NCD 67/62 at 25 cm

VISION RE: 6/5-3 **LE:** 6/5

PINHOLE VISION RE: 6/5-1 **LE:** 6/5-1

REFRACTION RE: -0.50/+0.25 x 85 **LE:** -0.25DS

VA Distance RE: 6/5 **LE:** 6/5

Near RE: N5 at 25cm **LE:** N5 at 25cm (habitual working distance)

ACCOMMODATION RE: 12.0 **LE:** 12.0 **Binoc** 14.0

BINOCULAR STATUS with Rx DV Cover test 2 Δ exo
NV Cover test Δ exo

MOTILITY full, no diplopia

CONVERGENCE NPC = 5cms

PUPIL REACTIONS Direct, consensual and near reflexes present

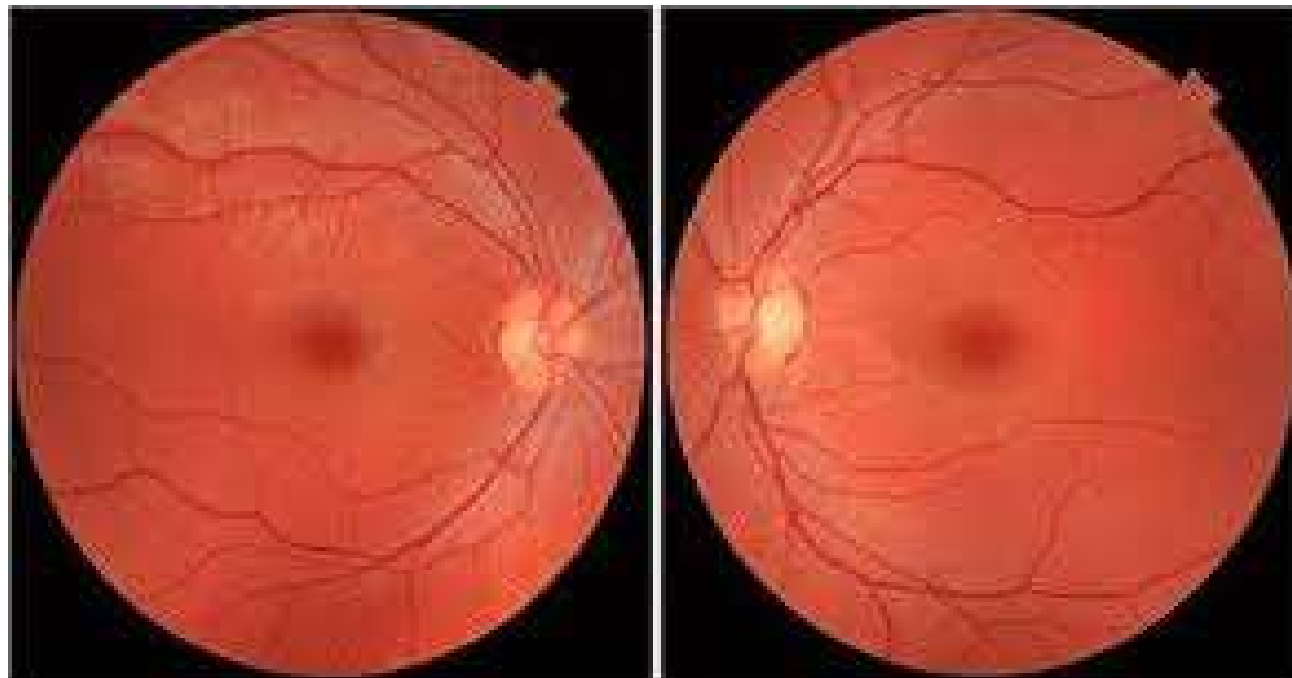
FUNDUS EXAMINATION see attached

R58

EXTERNAL EYE EXAMINATION normal healthy appearance

COLOUR VISION see attached

Fundi



R58

Colour Vision Binocular

ISHIHARA TEST SCORE SHEET (38-PLATE EDITION, 1979)

NAME:

DATE:

PLATE	SCORE	NORMAL	DEFICIENT	TOTAL CB/ WEAK	ANOPIA	PROT ANOMALY	ANOPIA	DEUTER ANOMALY
1	12	12	12	12	12	12	12	12
2	3	8	3	-				
3	6	6	5	-				
4	29	29	70	-				
5	57	57	35	-				
6	8	5	2	-				
7	3	3	5	-				
8	15	15	17	-				
9	24	74	21	-				
10	2	2	-/X					
11	6	6	-/X					
12	97	97	-/X					
13	45	45	-/X					
14	5	5	-/X					
15	7	7	-/X					
16	10	16	-/X					
17	73	73	-/X					
18	-	-	5	-				
19	-	-	2	-				
20	-	-	45	-				
21	-	-	73	-				
22	26	26			6	(2)6	2	2(6)
23	42	42			2	(4)2	4	4(2)
24	35	35			5	(3)5	3	3(5)
25	96	96			6	(9)6	9	9(6)

NOTES: - no numeral read X incorrectly read A(B) A clearer than B